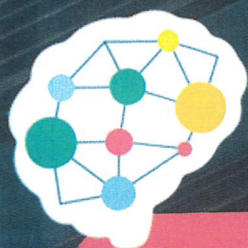


EMBRACING AUTISM



Tickets £20
Tea and
coffee
included

A day that focuses on skills and strategies, for parents, carers and professionals supporting a child with Autism.

Topics include:

- Supporting your autistic child to thrive - adapting to meet the needs of the autistic young person and practical strategies.
- Support for SEN in education & what to do if it's not working.
- Supporting Young People to Make Sense of their Experiences - empowering young people and putting them at the centre of their experience.

Discretionary tickets available to families on request.



4 February 2026

The Pallant Centre,
Havant, Hampshire
PO9 1BE

9 July 2026

Junction Church,
2 Romsey Road,
Eastleigh, SO50 9FE

17 November 2026

Andover Community Church
Charlton Road, Andover
SP10 3JH

For more information scan the QR code or visit:

<https://hampshirecamhs.nhs.uk/events/>

